

Benefit from in-house testing

Superior veterinary solution provider

Incorporate the VetScan® VS2 into your practice for your advantage and realize the benefits immediately.

Get reference-lab quality results in twelve minutes – maximize efficiency and increase your clients' satisfaction.

- Pet owners appreciate that you provide on-site solutions, and make confident clinical decisions immediately – even on weekends, or in cases of emergency.
- Castrations and surgeries are daily routine. Prior to administering anesthesia blood work results help to evaluate general organ functions, and to determine hydration status.
- Get the information you need to make a confident clinical decision – within 12 minutes.

Obtain complete chemistry results with only three drops of whole blood

Are you being consulted by owners of small or exotic animals like mice, hamsters, parrots, or chameleons?

Then you are familiar with the problem: getting blood chemistry results can be particularly challenging when your patients only tolerate a small blood draw; and these small samples are particularly vulnerable to degradation while in transit to an outside provider.

With the VetScan® VS2, you never need to take this risk again. You can get comprehensive chemistry results with just three drops of whole blood – right at the patient's side.

Three easy steps for results in minutes



1 – Add sample



2 – Insert rotor



3 – Read results

From sample to complete panel results in 3 steps and 12 minutes.

888-2102E-ENG Rev. D

ABAXIS
Closer to Care.

ABAXIS
Closer to Care.

VetScan
VS2

VetScan
VS2



ABAXIS Europe GmbH
Bunsenstr. 9-11
64347 Griesheim · Germany
Phone +49 6155 780 21 0
E-mail abaxis@abaxis.de
Internet www.abaxis.de

ABAXIS Inc.
3240 Whipple Road
Union City, CA 94587 · USA
Phone +1 510 675 65 00
Internet www.abaxis.com

Tomorrow's veterinary diagnostics, today
Breakthrough on-site clinical chemistry analyzer

Abaxis and VetScan are registered trademarks of Abaxis, Inc. © Abaxis 2014

ABAXIS
Closer to Care.

Revolutionizing on-site diagnostic testing

The VetScan® VS2 is an innovative, state-of-the-art chemistry, electrolyte, immunoassay and blood gas analyzer that delivers uncompromising accuracy from just three drops of blood. The VetScan® VS2 is amazingly simple and intuitive. It features an advanced user interface and precise reference laboratory quality results in 12 minutes from 100µl of whole blood, serum or plasma. The VS2 is ideal for veterinary practices, clinics and research laboratories.

Features	Benefits
<ul style="list-style-type: none"> Chemistry, electrolyte, immunoassay and blood gas with one simple instrument 	<ul style="list-style-type: none"> Save time, counter space and money while improving in-house testing
<ul style="list-style-type: none"> Accuracy comparable to reference laboratories 	<ul style="list-style-type: none"> Offers peace of mind in diagnosing and treating patients appropriately
<ul style="list-style-type: none"> Small, elegant, space-saving design 	<ul style="list-style-type: none"> The VS2 requires minimal counter space; all applications and information can be accessed through a full color touch screen
<ul style="list-style-type: none"> Speed: 12 minutes to results 	<ul style="list-style-type: none"> Obtain results, diagnose, discuss with clients and begin treatment within one visit
<ul style="list-style-type: none"> Intelligent Quality Control (iQC®) 	<ul style="list-style-type: none"> iQC® monitors the analyzer, rotor and sample before and during every analysis to ensure reliable results
<ul style="list-style-type: none"> 100 µl sample size – whole blood, serum or plasma 	<ul style="list-style-type: none"> Test a full chemistry profile using only three drops of sample from multiple species – vital in smaller patients
<ul style="list-style-type: none"> Specialty tests available 	<ul style="list-style-type: none"> Total T4, Bile Acid, tCO₂, UA and Canine Heartworm on rotor profile saves time and money; no need to send out blood work or running multiple tests
<ul style="list-style-type: none"> Maintenance-free 	<ul style="list-style-type: none"> Reduce your costs and save time: <ul style="list-style-type: none"> No internal cleanings needed No sample preparation – test whole blood
<ul style="list-style-type: none"> Complete portability 	<ul style="list-style-type: none"> The 5.3 kg analyzer can be used anywhere and anytime
<ul style="list-style-type: none"> Set and archive reference ranges 	<ul style="list-style-type: none"> Enter your own species reference intervals as well as archive ranges for later use
<ul style="list-style-type: none"> Stores 5,000 patient records 	<ul style="list-style-type: none"> Easy patient data recall
<ul style="list-style-type: none"> Detects hemolysis, lipemia and icterus 	<ul style="list-style-type: none"> Reporting levels of HEM, LIP and ICT provides useful information on patient samples
<ul style="list-style-type: none"> Supports several USB peripherals 	<ul style="list-style-type: none"> Connect your LIS or praxis management software by using the integrated USB or Ethernet port
<ul style="list-style-type: none"> Connectivity 	<ul style="list-style-type: none"> Connect multiple tools such as a printer, a keyboard and a LIS using four available USB ports
<ul style="list-style-type: none"> Full range of instrument settings 	<ul style="list-style-type: none"> Provide the ability to customize your analyzer by offering advanced patient information, five language choices, reference range labels, analysis progress bar, screen saver time options and more

iQC® accuracy and precision – reliable results with every rotor run

The VetScan® VS2 chemistry analyzer has a sophisticated intelligent Quality Control (iQC®) system to assure quality and dependable results. iQC® is a series of automatic checks that verify the chemistry, optics and electronic functions of the analyzer during each run. iQC® guarantees that in any environment only accurate and precise results are reported. iQC® ensures that only accurate and precise results are reported.

Summary of iQC® checks

Bar code

- Verifies current dating
- Cyclic redundancy check verifies accurate transfer of the reagent specific data to the analyzer software:
 - test panel,
 - lot number,
 - expiration date,
 - and the reagent calibration factors

Chemistry

- Confirms the viability of the analyte-specific reagents
- Monitors all reactions in process

Fluidics

- Verifies the presence of sufficient sample and diluent
- Verifies the presence of diluted sample in all reagent cuvettes

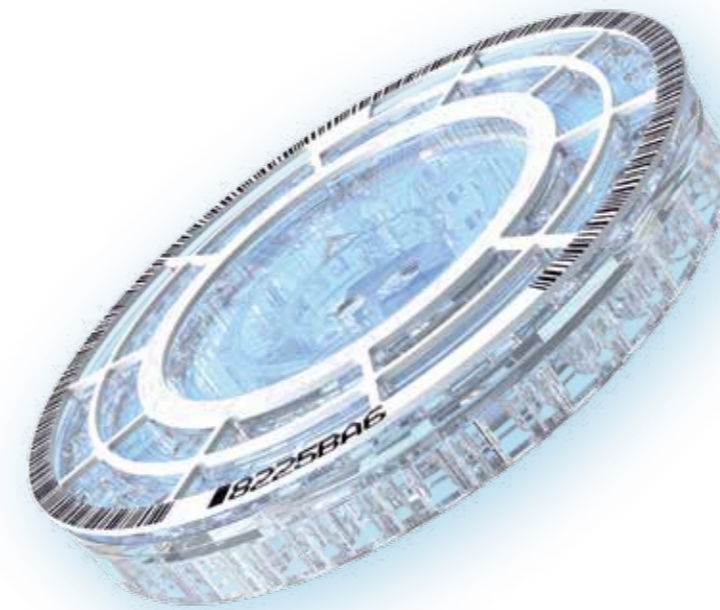
Sample

- Quantifies physical interferents (hemolysis, lipemia, icterus)
- The level of interference is indicated on the result printout

Software / memory

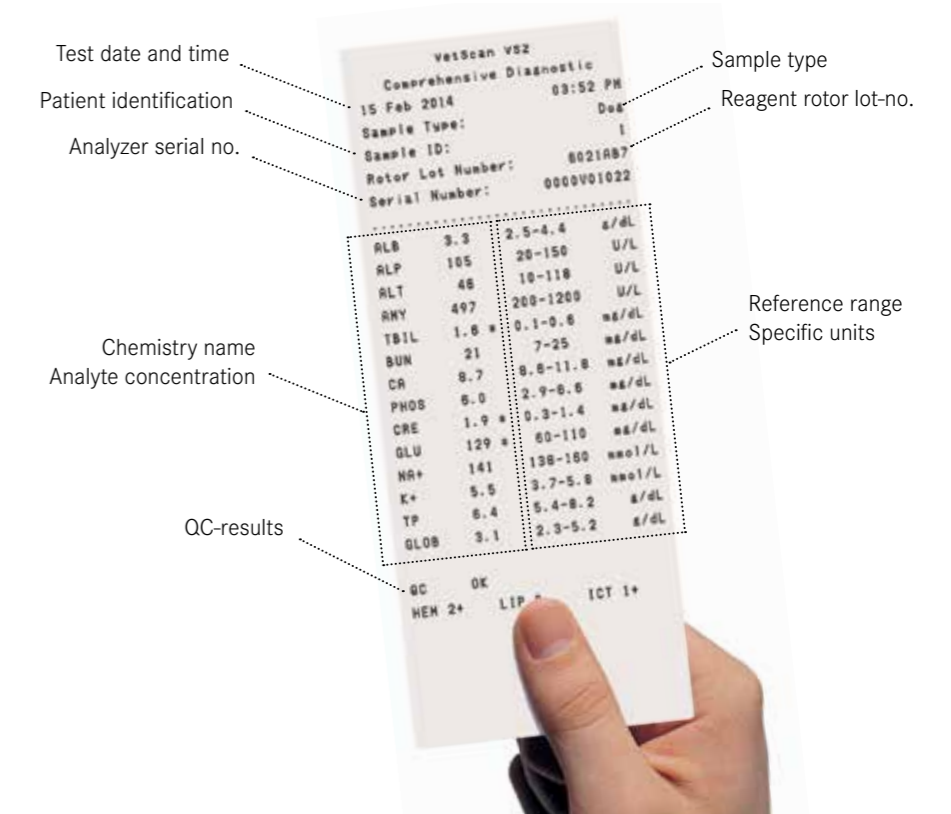
- The architecture of the two microprocessors optimizes real time performance
- Synchronizes the flashing of the lamp with the position of specific cuvettes

From the self-test at power-up to the recording and printing of patient results, the VetScan® VS2 conducts multiple QC checks automatically with each run.



Comprehensive chemistry reports at a glance

The calculated results are saved and printed automatically. All data can be recalled and printed later as needed. The results are printed on adhesive paper for easy placement into the patient's file. The results can be transferred automatically into your Laboratory Information System (LIS).



*	Asterisk: results are outside the reference range printed next to the analyte concentration
<	“Less than” symbol: results are lower than the dynamic range printed next to the lowest value of the dynamic range
>	“Greater than” symbol: results are higher than the dynamic range printed next to the highest value of the dynamic range
Troubleshooting flags printed in place of numbers when a result cannot be determined	
~ ~ ~	Chemistry suppression
HEM	Hemolysis
LIP	Lipemia interference
ICT	Icterus interference
Validity check symbol	
QC: OK	Reagent QC (RQC) results are within the expected ranges
Indices which indicate the degree of hemolysis, icterus, and lipemia found in the sample	
HEM/LIP/ICT: 0/1+/2+/3+	Hemolysis, lipemia and icterus are measured on a scale of 0 (clear), 1+ (slight), 2+ (moderate), and 3+ (gross)